

Investigation of Dry Granulation and Wet Granulation Effect on Dissolution Profile of the Developed Film Coated Tablets Containing Eplerenone

Elin İlayda Deniz*, Cüneyt Toprak, and Gökay Gün

Research and Development Department, World Medicine İlaç San ve Ticaret A.Ş., Istanbul, Turkey

*Corresponding author: Elin İlayda Deniz, Research and Development Department, World Medicine İlaç San ve Ticaret A.Ş., Istanbul, Turkey, E-mail: ilayda.deniz@worldmedicine.com.tr

Received: 06 Sep, 2021 | Accepted: 20 Sep, 2021 | Published: 25 Sep, 2021

Citation: Deniz Eİ, Toprak C, Gün G (2021) Investigation of Dry Granulation and Wet Granulation Effect on Dissolution Profile of the Developed Film Coated Tablets Containing Eplerenone. J Drug Res Dev 7(2): dx.doi.org/10.16966/2470-1009.164

Copyright: © 2021 Deniz Eİ, et al. This is an open-access article distributed under the terms of the Creative Commons Attribution License, which permits unrestricted use, distribution, and reproduction in any medium, provided the original author and source are credited.

Abstract

The objective is to observe and improve drug release of Eplerenone which is BCS Class II API by applying dry granulation and wet granulation process. Inspra 50 mg film coated tablets, manufactured by Pfizer, were taken as reference product to compare with dissolution profiles of dry granulation applied product and wet granulation applied product. Investigation of the effect of wet granulation process on dissolution profiles of Eplerenone 50 mg film coated tablets has been demonstrated out in the scope the study. While f2 similarity factor is 44.93 for dry granulation applied product, it is 60.62 for wet granulation applied product when compared to reference product. It comply that dissolution rate of wet granulation applied product is more proper to the specification than dry granulation applied product. The study demonstrates the effect of different granulation process on dissolution rate.

Keywords: Wet granulation; Dry granulation; Dissolution; Eplerenone

Introduction

Eplerenone with the CAS registry number of 107724-20-9 is a Selective Aldosterone Receptor Antagonist (SARA) and used for treatment of the patients with chronic heart failure and high blood pressure caused by resistant hypertension due to elevated aldosterone. The molecular formula and weight of Eplerenone are $C_{24}H_{30}O_6$ and 414.49 respectively [1].

Within the Biopharmaceutics Classification System (BCS), Eplerenone is class-II Active Pharmaceutical Ingredient (API) [2]. It is off-white to white powder which is soluble in Dichloromethane, slightly soluble in Methanol and insoluble in water [1]. The structure of the Eplerenone molecule is shown in below as figure 1. Eplerenone is found as tablet form with 25 mg and 50 mg dosage in the market and supplied from Pfizer as Inspra 25 mg film coated tablets and Inspra 50 mg film coated tablets.

Combination of small particles with the help of mechanical force or a binding agent to form granules is called granulation in the pharmaceutical industry. It is important for improving API's ultimate utility and controlling the release rate of the active ingredient. The purposes of the granulation can be described as follows; improving the flow characteristic of the mixture, preparing homogeneous mixtures that will not disperse over time and improving compaction [3]. Dry

granulation and wet granulation are most common granulation methods for solid dosage forms.

Dry granulation is forming granules without using a liquid solution. The process is applying for products which are sensitive to moisture and heat. It can be done in two ways as slug compression or compactor. Slug compression process is done by pressing and crushing tablets (briquettes) in order to make powder mixtures whose flowability is not suitable for the tablet pressing process to granules. Compactor is the process of obtaining granules by compacting the powder with two rollers, obtaining briquettes in strips and grinding them [4,5].

Wet granulation is forming granules by adding a liquid solution to powder. Solvent that is used in granulation should be volatile, e.g. water, ethanol and isopropanol. The process helps to reduce segregation possibility by binding excipient with API. This method yields better flowability to a formulation. Wet granulation takes advantages of being robust process suitable for most compounds against dry granulation. Low shear granulation, high shear granulation and fluid bed granulation are type of granulation. Selection of the method depends on physicochemical properties of the API and excipients, required flow and release properties [4,5].

Considering the fact that almost 40% of pharmaceuticals in the

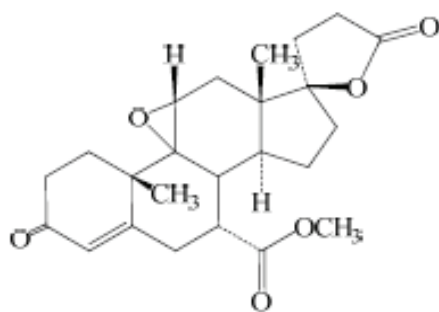


Figure 1: Structure of the Eplerenone molecule [1].

market and 90% of the pharmaceuticals in the development stage have poor solubility in water, dissolution, which is drug release, is one of the key phenomena for producing pharmaceuticals and developing new formulations of drugs [6,7]. Drug dissolution for solid dosage forms should be occurring in appropriate manner and can be expressed as the dissolved amount of drug as a function of the test time. The criterion for the similarity between two *in vitro* dissolution profiles is defined as similarity factor (f_2) by Center for Drug Evaluation and Research (CDER) and human medicines evaluation unit of the European agency (EMA). In general f_2 values higher than 50 (50-100) shows the similarity of the dissolution profiles. The factors that affect dissolution are as follows; [8-10]

- Solubility,
- Polymorphic form,
- Particle size,
- Amount in the drug dosage form [8],
- Surface active agents,

The effect of surface active agents on dissolution is taken into account while determining the limits of the physical stability of the preparation [11]. As an anionic surfactant Sodium Lauryl Sulphate (SLS) is used as wetting agent in solid dosage forms [12]. Sodium lauryl sulphate has the effect of increasing on the dissolution rate [13].

Materials

Active substance and excipients that are included in the formulation, their functions and suppliers are described in table 1 [12]. The same unit formula used for both dry and wet granulation methods to be able to see effect of different production methods on dissolution profile clearly. Since the critical substance that have effect on increment of the dissolution rate is SLS, the same amount of SLS was used for both wet granulation and dry granulation applied developed product as the amount in the reference product in order to make a fair comparison between the results of two different methods.

Methods

Development of the formulation of Eplerenone 50 mg film coated tablets has been carried out with two different methods; dry granulation which is trial 1 and wet granulation which is trial 2. Both dry and wet granulation methods had been applied to same unit formula. Inspra 50 mg film coated tablets are taken as reference product.

Trial 1

Eplerenone, lactose monohydrate, croscarmellose sodium, hypromellose, and avicel PH-102 were sifted with 0.6 mm sieve and mixed in the Qubic mixer at 60 rpm for 15 minutes. Sodium lauryl sulphate was sifted with 0.6 mm sieve and added to the first mixture and mixed for 10 minutes. Talc and Magnesium stearate were sifted with 0.5 mm sieve and added to the second mixture separately and mixed for 3 minutes. Slug compression is applied by compressing, crushing and compressing tablets respectively. The dispersion of Opadry yellow, which is Hydroxypropyl Methyl Cellulose (HPMC) based film coating material, in purified water is prepared for coating process, mixed at 500 rpm for 30 minutes. Core tablets that compressed in accordance with their specifications are coated with Opadry yellow dispersion. Film coating is applied till 10 mg coating is done. Flow diagram of the process is shown in figure 2.

Trial 2

Eplerenone, lactose monohydrate, croscarmellose sodium, microcrystalline cellulose and hypromellose were mixed in the high shear granulator. Sodium lauryl sulphate dissolved in purified water. Granulation is done by adding solution to the mixed powder. Wet granules dried at 45°C in fluid bed dryer. The loss on drying value was checked with Infrared moisture analyzer and is not more than 3%. Dry granules were sifted with 0.8 mm Frewitt sieve. Microcrystalline cellulose added to the dry granules and mixed in Qubic mixer for 10 minutes at 60 rpm. Talc and magnesium stearate, which were sifted

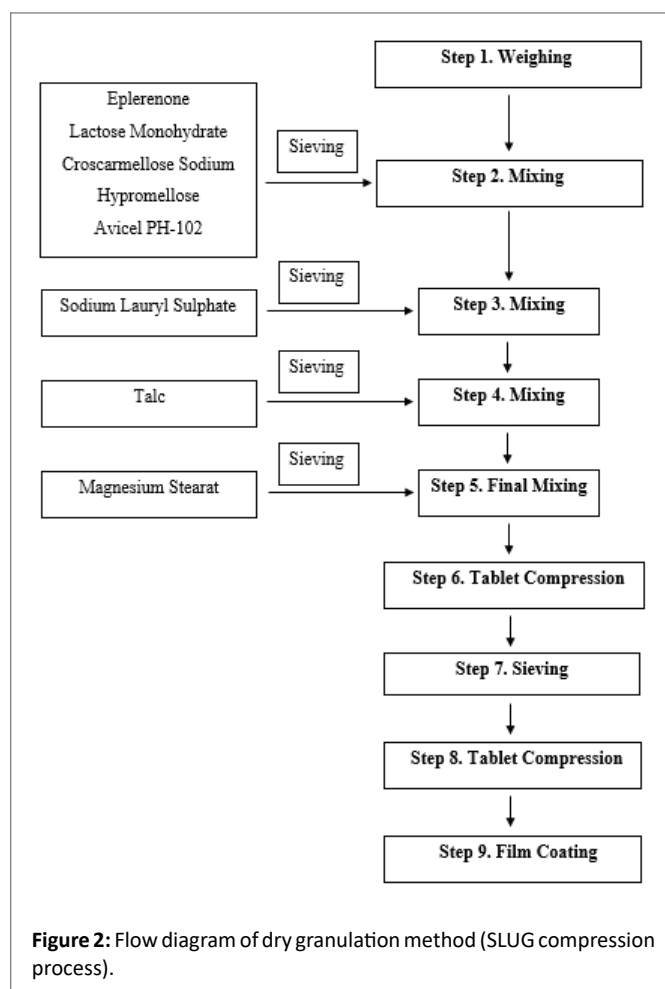


Figure 2: Flow diagram of dry granulation method (SLUG compression process).

Table 1: Formulation of the Eplerenone 50 mg film coated tablets.

Materials	Unit Formula* (mg)	Function	Supplier
Active Substance			
Eplerenone	50.00	Active Substance	MSN
Excipients			
Lactose Monohydrate	71.40	Diluent	MEGGLE
Sodium Lauryl Sulphate	1.70	Surfactant	HUNSTMAN
Croscarmellose Sodium	8.50	Disintegrant	DUPONT
Hypromellose	-	Binder	COLORCON
Microcrystalline Cellulose	-	Filling Agent	DUPONT
Talc	-	Lubricant	LUZENAC
Magnesium Stearate	-	Lubricant	PETER GREVEN
Core Tablet Weight			
Opadry Yellow	10.00	Coating Agent	COLORCON
Pure water ¹	-	-	-
Film Coated Tablet Weight			
	-		

¹Not found in finished product.

*As a company policy, we cannot share the unit formula.

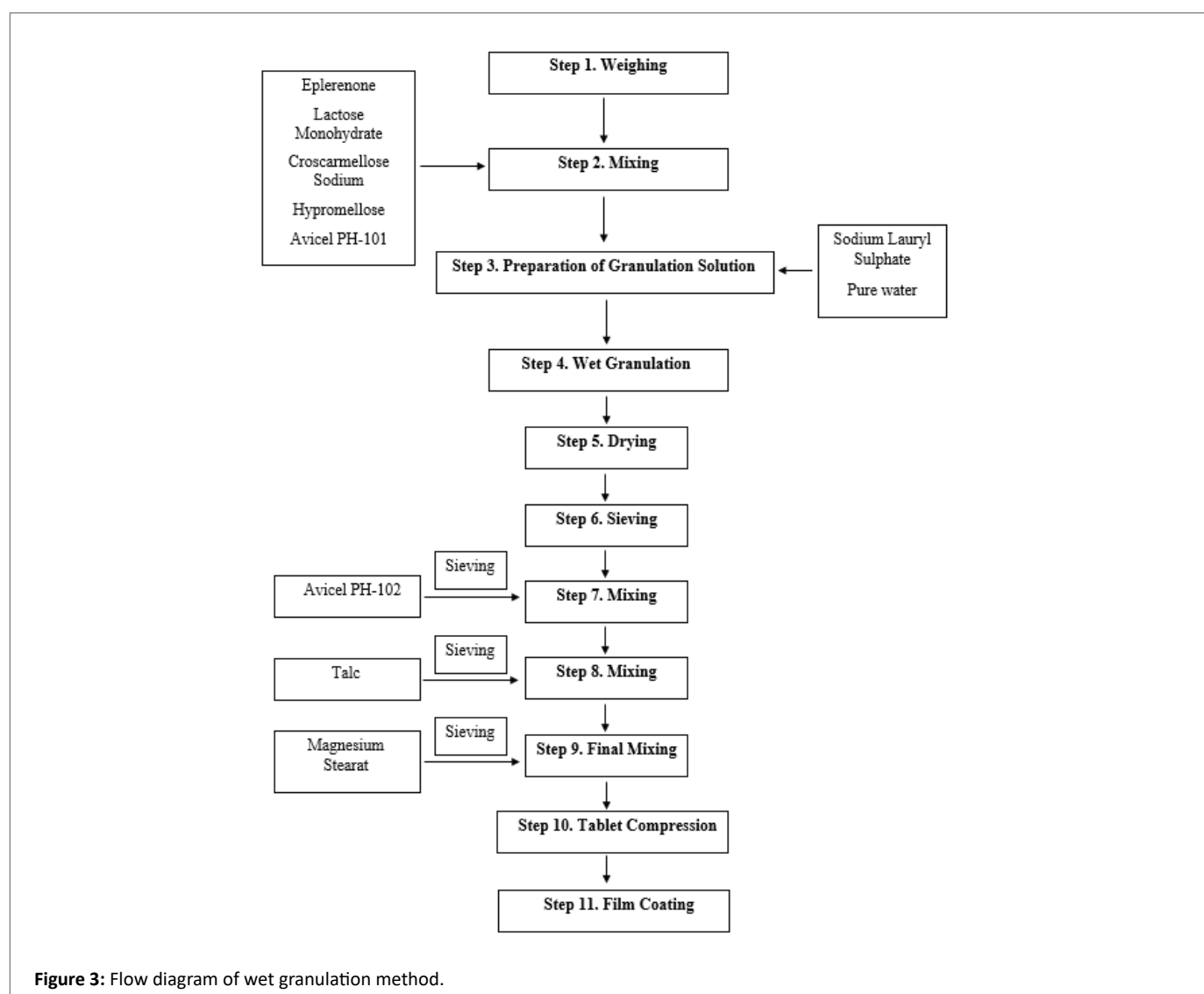


Figure 3: Flow diagram of wet granulation method.

with 0.5 mm sieve, added to dry granules one by one and mixed for 3 minutes respectively. Core tablets are compressed in accordance with their specifications and coated 10 mg with Opadry yellow dispersion. Flow diagram of the process is shown in figure 3.

Results and Discussion

In the scope of the study, dissolution test was applied on both reference product which is Inspra 50 mg film coated tablets and Eplerenone 50 mg film coated tablets which are produced by applying two different methods that are dry granulation and wet granulation.

Chromatographic conditions for dissolution are as given in table 2 according to the European Pharmacopoeia (EP) monograph 2.9.3. The method used for Eplerenone amount determination is based on European Pharmacopoeia (EP) monograph 2.2.25. The instruction is 'minimum 80% of label claim in 30 minutes' [14,15].

The results of dissolution rate profiles of reference product and dry granulation applied product and wet granulation applied product are given in the table 3 and table 4, respectively. Besides, comparison of dissolution rate profiles of reference product vs. dry granulation

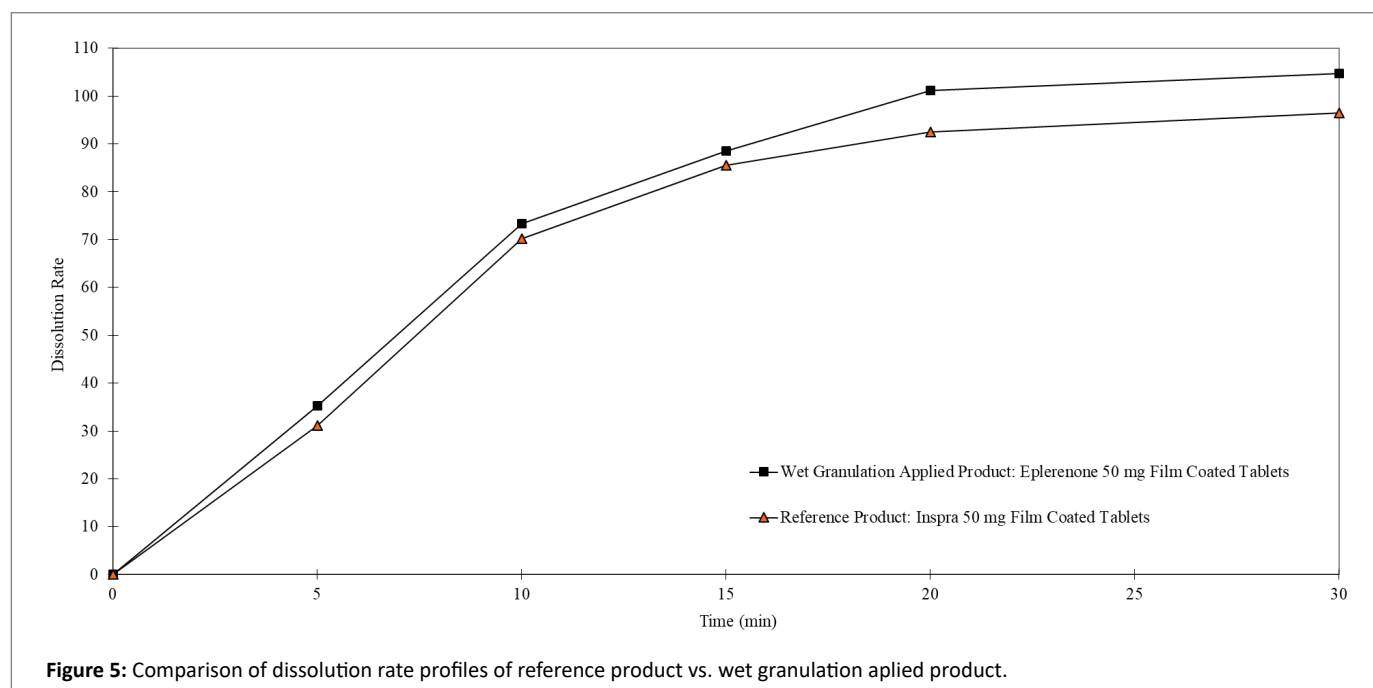
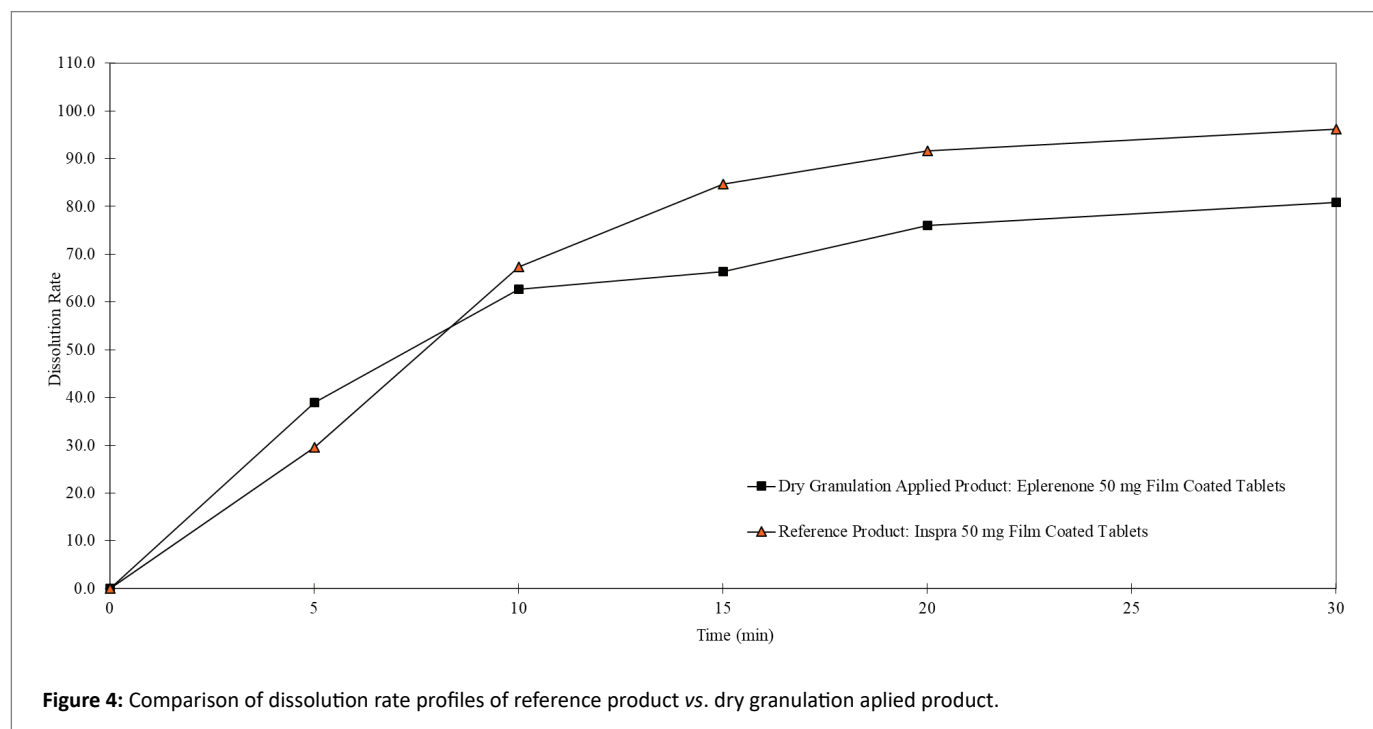


Table 2: Chromatographic conditions.

Used device	UV spectrophotometer
Wavelength	UV, 245 nm
Dissolution medium	0.1 N HCl
Volume of dissolution medium	1000 ml
Temperature of dissolution medium	37°C ± 0.5
Stirring speed	50 rpm
Apparatus	Pedal
Time	30 minutes

Table 3: Results of dissolution rate profiles of reference product and dry granulation applied product.

Time (Minute)	0	5	10	15	20	30
Product (%) Eplerenone 50 mg film coated tablets	0.0	38.96	62.62	66.41	76.02	80.85
Reference Product (%) Inspra 50 mg film coated tablets	0.0	29.51	67.42	84.72	91.66	96.21

Table 4: Results of dissolution rate profiles of reference product and wet granulation applied product.

Time (Minute)	0	5	10	15	20	30
Product (%) Eplerenone 50 mg film coated tablets	0.0	35.23	73.29	88.47	101.12	104.71
Reference Product (%) Inspra 50 mg film coated tablets	0.0	31.16	70.17	85.59	92.51	96.54

applied product and comparison of dissolution rate profiles of reference product vs. wet granulation applied product are given in the graphs-figure 4 and figure 5, respectively.

The results should be considered according to specification which is 'minimum 80% of label claim in 30 minutes'. According to results on the table 3, 96.54% of reference product dissolves in 30 minutes. However, 80.85% of dry granulation applied product dissolves in 30 minutes. Even the result comply the specification, it is still not approximate the dissolution rate of reference product which is 96.54%, which is undesired situation. Also, the graph of comparison of dissolution rate profiles of reference product *versus* dry granulation applied product shows the differences between profiles clearly. It explains that the f_2 similarity factor, which is 44.93, is not suitable.

According to the dissolution rate results of the wet granulation applied product as shown in table 4, 104.71% of product dissolves in 30 minutes while 96.54% of reference product dissolves in 30 minutes. With the increment of the dissolution of tablets of wet granulation applied product, f_2 similarity factor, which is 60.62, to reference product is also increased.

Conclusion

The effect of the wet granulation process on dissolution profile of Eplerenone 50 mg film coated tablets is investigated by comparing both dissolution rate results of dry granulation and wet granulation. Dissolution rate results of the products were compared with the

dissolution rate of the reference product. While dissolution is 80.85 for dry granulation applied product, it is 104.71 for wet granulation applied product within 30 minutes. Similarity factor f_2 is 44.93 and 60.62 for dry granulation applied product and wet granulation applied product, respectively. The results demonstrate that drug release of wet granulation applied product occur in more appropriate manner when compared with dry granulation applied product. The study shows that besides the effects of solubility, polymorphic form, particle size, amount in the drug dosage form and surface active agents, different manufacturing process are also have significant effect on dissolution rate.

Acknowledgement

The study was supported by World Medicine İlaç San. ve Ticaret A.Ş.

References

1. Drug master file of Eplerenone, MSN, Version: PL/AP-ROW/03/09-15.
2. Khames A (2019) Formulation and characterization of eplerenone nanoemulsion liquisolid, an oral delivery system with higher release rate and improved bioavailability. *Pharmaceutics* 11: 40.
3. Aulton ME, Taylor MG (2007) *Aulton's Pharmaceutics: The design and manufacture of Medicine*. 3rd Edition, Churchill Livingstone, United Kingdom 410-417.
4. Jannat E, Al Arif A, Hasan MM, Zariz AB, Rashid HA (2016) Granulation techniques & its updated modules. *Pharma Innov* 5: 134-141.
5. Parikh DM (2009) *Handbook of Pharmaceutical Granulation Technology*, Third Edition. Taylor & Francis, United Kingdom.
6. Butt S, Hasan SMF, Hassan MM, Alkharfy KM, Neau SH (2019) Directly compressed rosuvastatin calcium tablets that offer hydrotropic and micellar solubilization for improved dissolution rate and extent of drug release. *Saudi Pharm J* 27: 619-628.
7. Cascone S (2017) Modeling and comparison of release profiles: Effect of the dissolution method. *Eur J Pharma Sci* 106: 352-361.
8. Costa P, Sousa Lobo JM (2001) Modeling and comparison of dissolution profiles. *Eur J Pharm Sci* 13: 123-133.
9. United States Pharmacopeial Convention (2009) *United States Pharmacopeia [and] National Formulary*. Volume 2. United States Pharmacopeial Convention, United States.
10. USFDA (2009) Q8 (R2) Pharmaceutical Development.
11. Taylor Jr PW, Wurster DE (1965) Dissolution kinetics of certain crystalline forms of prednisolone II: Influence of low concentrations of sodium lauryl sulfate. *J Pharm Sci* 54: 1654-1658.
12. Rowe RC, American Pharmacists Association (2009) *Handbook of pharmaceutical excipients*. 6th Edition, Pharmaceutical Press, United Kingdom 651-652.
13. Levy G, Gumtow RH (1963) Effect of Certain Tablet Formulation Factors on Dissolution Rate of the Active Ingredient I11. *J Pharm Sci* 52: 1139-1144.
14. Council of Europe (2010) *European Pharmacopoeia*. 7th Edition, Council of Europe, France.
15. USFDA (2011) Q4B Annex 7 (R2) Dissolution Test General Chapter.